

WHY CIFA



Truck Pumps CARBOTECH Series



**WHY
CIFA**



FIRST IN INTRODUCING CARBON FIBER IN CONSTRUCTION MACHINERY

Ahead of their times, innovating constantly the products. A commitment that, since the beginning, has seen us as key players, making the story of this industry. The introduction of carbon fiber in the construction of Carbotech series booms places itself in this journey, with the goal of improving performances of our equipments and quality of the job of those who use them every day in the job site.



READY FOR DELIVERY



MANUFACTURING FACILITIES



LEAN PRODUCTION



PLACING BOOMS

Available lengths to reach all distances: from 40 meters to 80 meters.



PUMPING UNITS

Two closed loop types according to the desired way of pumping.



CONTROL SYSTEMS

Designed and positioned to facilitate job and to speed-up all operations.



STABILIZATIONS

Different types of stabilization in order to guarantee a safe work in a small area.



SAFETY

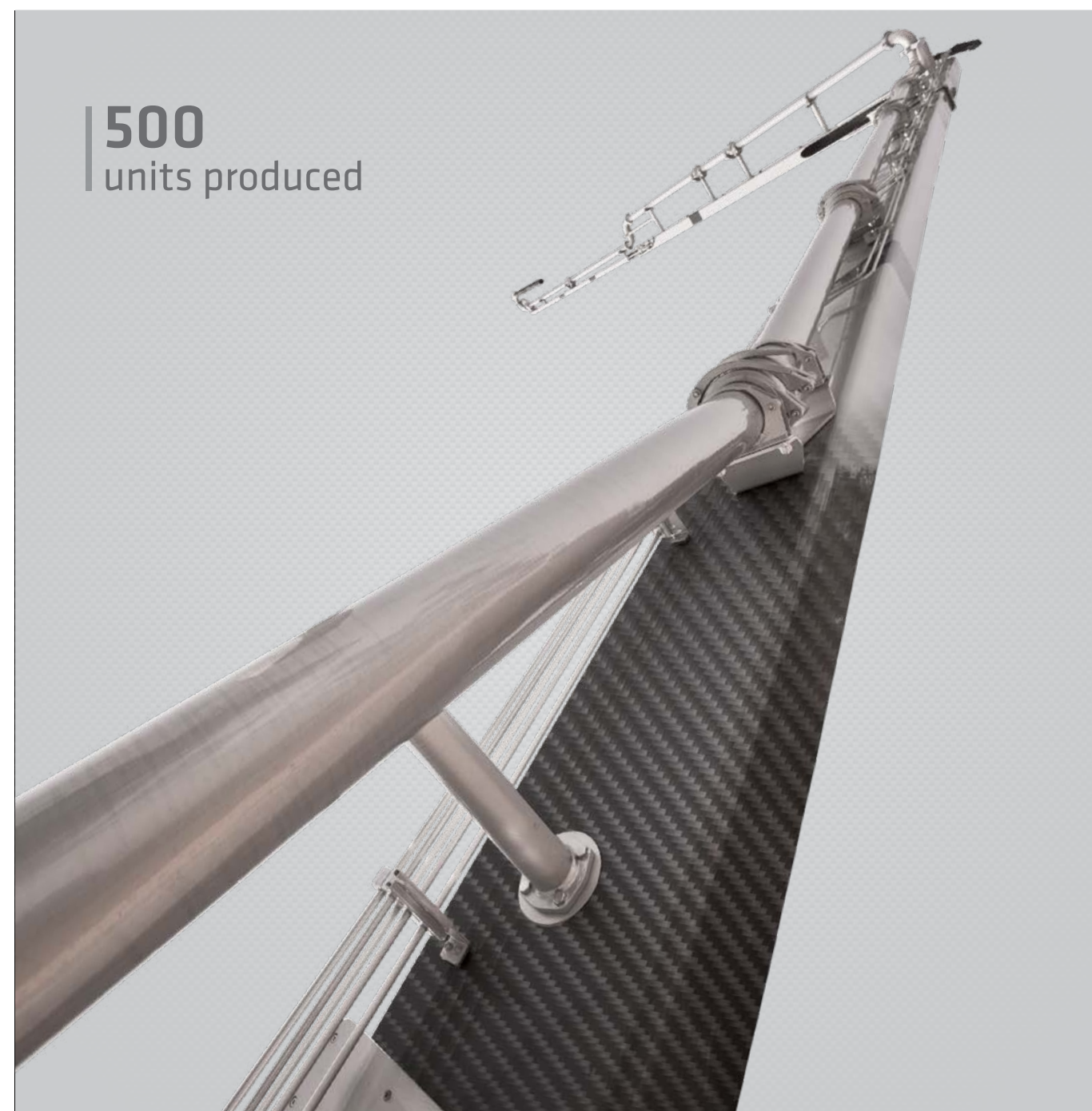
Different systems to work and move the boom in all its configurations in total safety.



FINISHING

Customized painting available upon customers' request.

500
units produced



LEASING



Available in Italy, Russia, China, South Africa, Australia, USA and Germany.

ITALIAN DESIGN



Main components of the CIFA truck pumps are Italian or German brand

MOUNTED ON ALL TRUCK BRANDS



CIFA truck pumps can be mounted on all truck brands. According to CIFA truck specifications documentation

TRAINING FOR OPERATORS



CARBOTECH SERIES: THE REVOLUTION IN CONCRETE DISTRIBUTION

In 2010 CIFA introduced the use of composite materials in the machinery construction industry, making a series of concrete distribution booms with this innovative technology. Thanks to the growing market demand, CIFA offers to the market a wider range of Carbotech Series, from 40 to 80 meters boom.



CARBOTECH

CIFA Carbotech Video



Lighter and, so, longer; but at the same time stronger and more resistant. CIFA Carbotech booms allow to obtain unparalleled results, overcoming inviolable limits, in terms of heights and lengths.

+20% Stronger

TO WITHSTAND THE HARDEST STRESSES
Composite materials offer higher resistance to strains and fatigue compared to steel.

-25% Weight

LIGHTER, ALSO IN TRANSFERS
To respect legal limits and at the same time to save fuel in transfers compared to traditional pumps of the same length.

+20% Length

LONGER, TO GET ANYWHERE
Greater boom length means less placings of the pump on the job site.

500
units produced
until today
(October 2022)

LIGHTNESS, LENGTH AND STRENGTH BEYOND ANY LIMIT



PLACING BOOM



STRENGTH AND RELIABILITY:
The booms mounted on CIFA truck pumps combine both strength and reliability. Each section of the boom has been designed for maximum structural resistance and fatigue strength. All Carbotech booms are tested against fatigue at the TEC testing center, allowing us to certify the life of these components with a 5 years warranty.



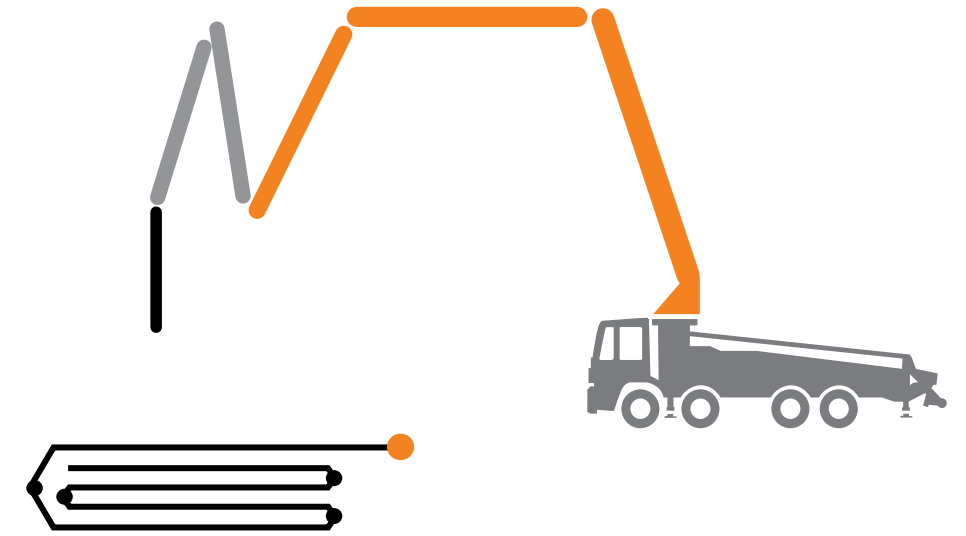
VERSATILITY AND FLEXIBILITY:
The different configurations of the booms on CIFA truck pumps ensure the greatest operative versatility and enable to reach almost any part of the construction yard, even those accessible with the most difficulty. Complete working flexibility together with great working speed, allows the complete extension of the boom and its perfect and fast positioning.



RZ Type

It provides maximum flexibility by combining R+Z solutions.

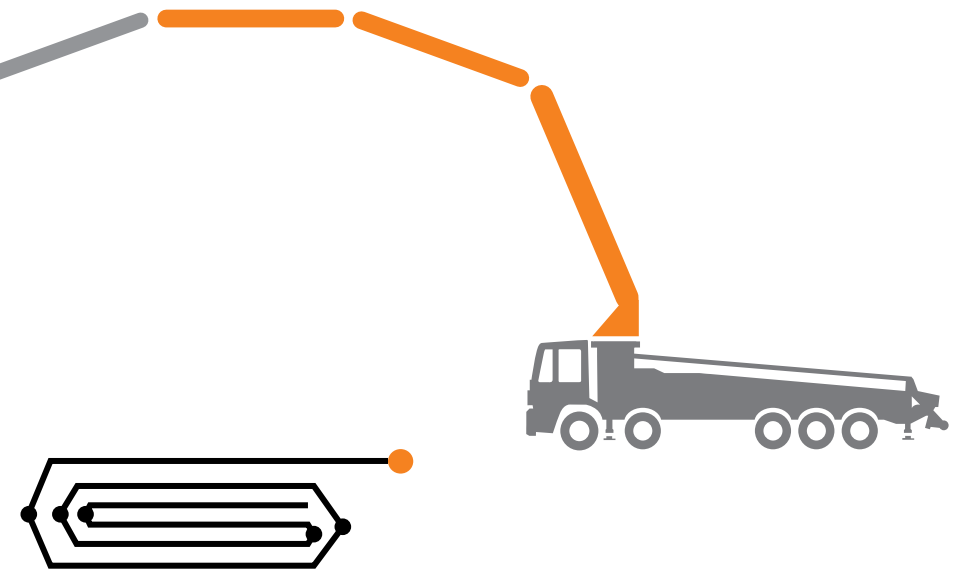
Available for:
K40H - K47H - K53H



RRZ Type

It provides maximum flexibility by combining R+Z solutions.

Available for:
K60H - K67H - K80H



FOLDING SYSTEMS



Completely removable, the pumping unit ensures gentle, continuous and regular flow. This technology guarantees an extremely efficient system for pumping different types of concrete, with aggregates of all sizes, reducing the number of cycles per minute while maintaining the same flow rate, thus ensuring less wear and longer life.

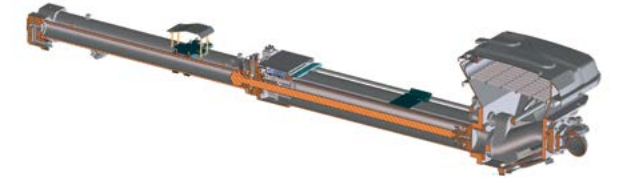


Closed Loop: Electronic management



HP1608EC

Available for:
K40H - K47H

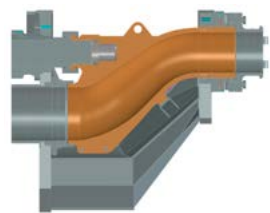


HP1808ECX

Available for:
K47H - K53H - K60H - K67H - K80H

PUMPING UNITS		HP1608EC	HP1808ECX
MAX. THEORETICAL OUTPUT	m ³ /h	160	180
MAX. PRESSURE ON CONCRETE	bar	80	83
MAX. NUMBERS OF CYCLES PER MIN.	n	31	27
CONCRETE CYLINDERS (DIAM. X STROKE)	mm	230x2100	260x2100
CONCRETE HOPPER CAPACITY	l	550	600
HYDRAULIC CIRCUIT	type	closed	closed

PUMPING UNIT



"S" VALVE:
The structure is made with varying thickness to achieve maximum resistance to wear even when using difficult types of concrete.



WEAR RING AND WEAR PLATE:
The ring and the plate are made of special anti wear material against abrasion and stress due to the concrete flow.



CIFA LONG LIFE PIPES MADE BY CIFA
CIFA truck pumps have long life pipes as standard equipment.



CIFA truck pumps have the first bend outside the pumping unit in long life pipes as standard equipment.

The quiet pumping system

A revolutionary system to drastically reduce vibrations, wear and noise. The "core" of the vibration is caused by the pumping unit movement therefore the system is placed in the 3 main fixing points and, thanks to the rubber absorbers, it reduces the vibrations transferred to the frame keeping the boom still while pumping.

- Low vibration
- Low noise
- Higher comfort of use
- Improved balancing while working
- Less wearing of key components



Rear Damping System



Front Damping System



CONTROL SYSTEMS



WIRED VIBRATOR AND HORN REMOTE
Convenient cable control dedicated to the mixer driver. It can be used from both sides of the hopper.



HYDRAULIC OUTRIGGERS CONTROL
Hydraulic controls on both sides of truck pump. The machine emergency stop is also positioned nearby.



BOOM PROPORTIONAL DISTRIBUTOR
Ergonomic hydraulic controls for boom.



REAR CONTROL PANEL
Control panel positioned on the rear side.



REMOTE CONTROL
Comfortable and lightweight for boom control and the management of the main machine functions. Different models and brands available.



DETACHABLE ELECTRICAL SYSTEM
The electrical system can be detached for easy maintenance.

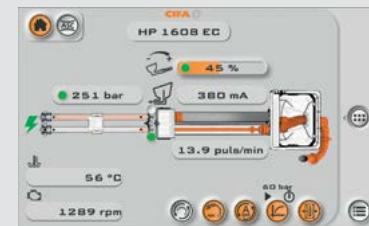
Smarternic®

Smarternic is the most advanced machine management system for truck-mounted pumps. It oversees every functionality providing a clear and user-friendly interface. It is available in the silver and gold versions as standard on Carbotech series according to the pump model. The gold version can be completed with the Smarternic advanced package delivering an additional set of features

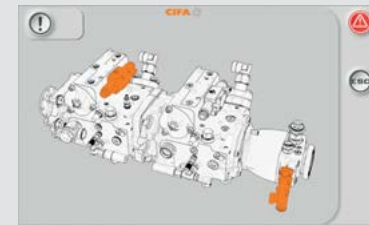
GOLD



DISPLAY LCD 7"



PUMPING UNIT MANAGEMENT
Automatic hopper-grid vibration



DIAGNOSTICS
In case of fault, the operator is guided to understand what's the subpart involved and graphically guided to understand the issue.



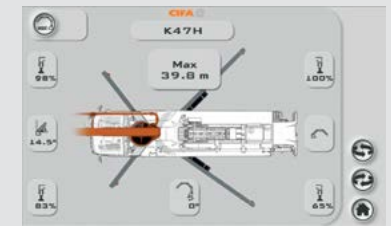
COUNTERS



AUTO RPM
Fully adjustable automatic truck RPM management



RAMPS MANAGEMENT
Fully adjustable pumping ramps management



MBE
Max Boom Extension

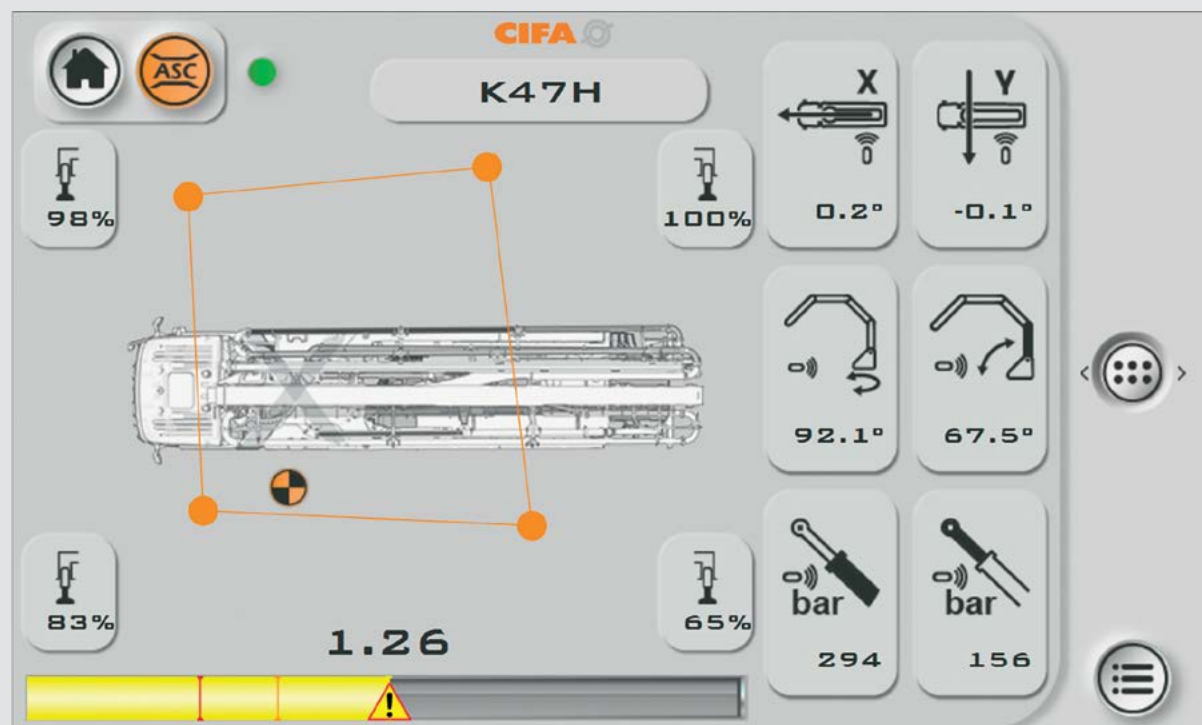


ASC
Advanced Stability Control

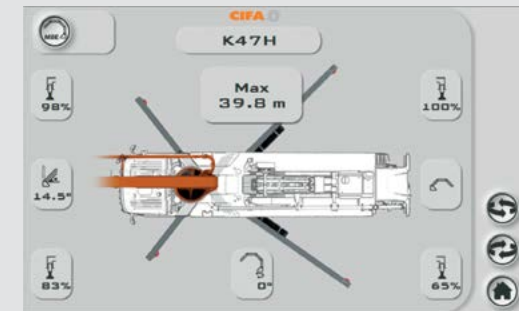
ASC ADVANCED STABILITY CONTROL

(complying EN 12001:2012)

The ASC system, included in SMARTRONIC GOLD, controls the stability of the truck-mounted pump in real time, in every short-rigging condition. The system is intelligent and maximizes the area reachable by the boom tip according to the actual outriggers configuration. When approaching the stability limit condition the boom is at first slowed down and then even stopped preventing a critical condition.



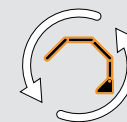
MBE MAX BOOM EXENSION



Max Boom Extension is part of the Smartronic GOLD features together with the Auto RPM and the Advanced Stability Control.

This function helps the operator to know the maximum distance reachable with the boom with a partial opening of the outriggers, before opening the boom

SMARTRONIC ADVANCED



Automatic Boom Folding and Unfolding

The function allows to open and close the boom automatically using a dedicated command on the radio remote.



ASC 2.0

Gives the possibility to move some boom sections even when the limit of the safety coefficient is reached.



Antibouncing System

The Anti-Bouncing function strongly reduces boom oscillations (up to -25%).



Radio remote control with display

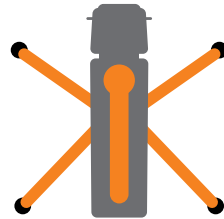


STABILIZATION

The front stabilization is available in four design concepts: single horizontal, single, double and triple telescopic-X-style outriggers. The rear stabilization is available in three design concepts: fixed, single extension and swing-out. Each machine has its stabilization system according to the size of the boom.

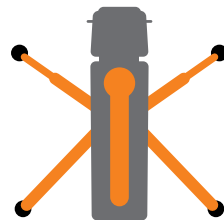
Front: Single telescopic X style
Rear: Swing-out

Available for:
K40H



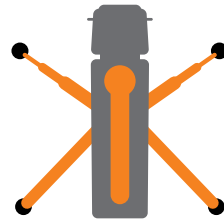
Front: Double telescopic X style
Rear: Swing-out

Available for:
K47H - K53H - K60H



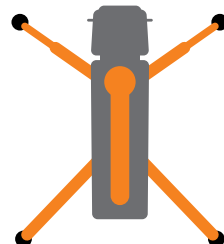
Front: Triple telescopic X style
Rear: Swing-out

Available for:
K67H



Front: Swing-out + Double telescopic X style
Rear: Swing-out

Available for:
K80H



All outriggers are designed to stabilize the machine in the right way in extraordinary tight spaces.

The sequences of the extension phase are quick in order to accelerate the stabilization.

SAFETY



MECHANICAL LOCK FOR ALL OUTRIGGERS



WATER BOX GRID PROTECTION



HOPPER GRID LIMIT SWITCH



PROTECTION FOR S-VALVE CYLINDERS



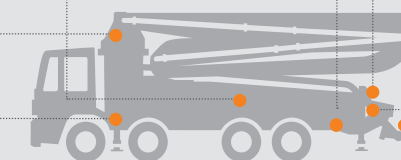
BOOM ROTATION LIMIT SWITCH



SUPPORT PLATES HOLDER



OUTPUT BEND LOCKING SYSTEM



OPTIONS

LIGHTS HOLDER UNDER THE HOPPER



CIFA VISTA: Remote machine monitoring



Pumping unit damping

TWO DIFFERENT TYPES OF SHUT OFF VALVE AS OPTION

The shut-off valve stops immediately the flow of the concrete.



Shut Off valve on endhose



Shut Off valve in pipeline



Activation by remote control



High pressure water pump



Air compressor for pipeline cleaning



Hopper cover



Rear camera

List of other components available on demand



Wood stocks holders



Ladder to fuel tank access



Light on boom

DATA SHEET

CARBOTECH



CARBOTECH K40H

PLACING BOOM	B5HRZ 40/36
PUMPING UNIT	160 m³/h 80 bar
DRIVEN BY	PTO OR GEAR BOX
CHASSIS	3 axles



CARBOTECH K47H

PLACING BOOM	B5HRZ 47/43
PUMPING UNIT	160 m³/h 80 bar
	180 m³/h 83 bar
DRIVEN BY	PTO OR GEAR BOX
CHASSIS	4 axles



CARBOTECH K53H

PLACING BOOM	B5HRZ 53/49
PUMPING UNIT	180 m³/h 83 bar
DRIVEN BY	PTO OR GEAR BOX
CHASSIS	4-5 axles



CARBOTECH K60H

PLACING BOOM	B6HRRZ 60/56
PUMPING UNIT	180 m³/h 83 bar
DRIVEN BY	PTO OR GEAR BOX
CHASSIS	5 axles



CARBOTECH K67H

PLACING BOOM	B7HRR 67/63
PUMPING UNIT	180 m³/h 83 bar
DRIVEN BY	PTO OR GEAR BOX
CHASSIS	6 axles



CARBOTECH K80H

PLACING BOOM	B7HRRZ 80/76
PUMPING UNIT	180 m³/h 83 bar
DRIVEN BY	PTO OR GEAR BOX
CHASSIS	7 axles

Find more info on trucks configuration at www.cifa.com/documentation



K47H - ITALY



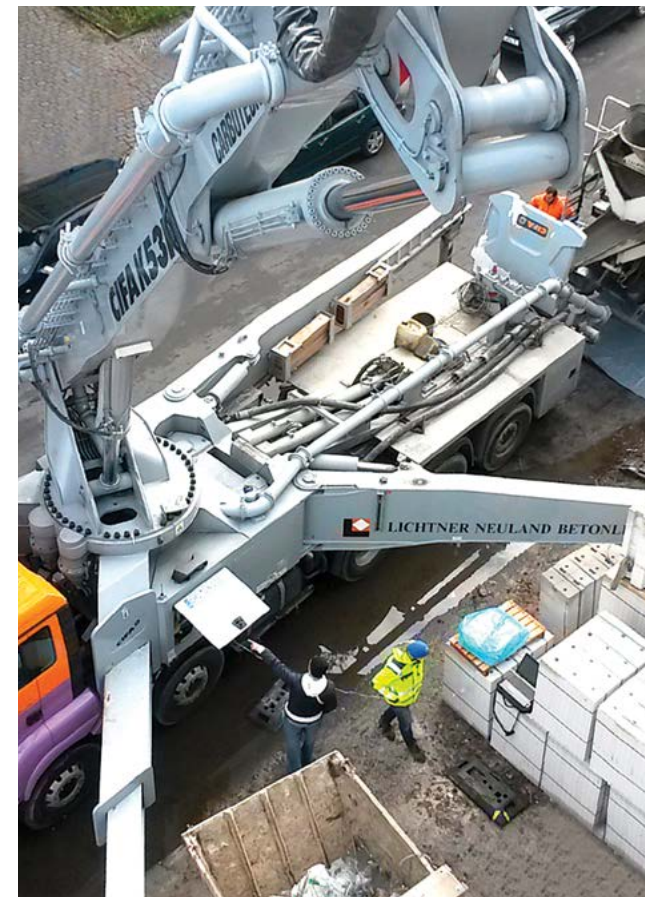
K40H - SPAIN



K60H - FRANCE



K67H - FINLAND



K53H - GERMANY



K40H - BELGIUM



K80H - POLAND

JOB SITES



Distributor



CIFA S.p.A.

Via Stati Uniti d'America, 26
20030 Senago (Milano) - Italy
tel. +39.02.990131
fax. +39.02.9981157

sales@cifa.com
www.cifa.com

